

## Application Rates and Timing

- **KaPre Spectra** may be blended with any compatible fertilizers and foliar sprays applied to all row crops, field crops, forage crops, feed crops, vegetable crops, trees, nut trees, vines, lawns, gardens, and ornamentals.
- KaPre Spectra can be foliar-applied at up to 12 ounces per acre per application. **Apply at least 2 oz. per acre in all foliar applications.**

*Dilute KaPre Spectra in a minimum of 20 gallons of water.*

## Applications with Herbicides

- **KaPre Spectra** may be applied at rates of 2 - 12 ounces per acre with non-selective herbicides.
- KaPre Spectra is NOT recommended for use with pre-emergence herbicides.
- KaPre Spectra is NOT recommended for use with selective herbicides.

## Transplanting and Cuttings

- Blend 2 oz. of **KaPre Spectra** per 20 gallons of solution.

## Cool Season Grasses

- Include KaPre Spectra with all foliar nutrient applications at 2 oz. per 25 gallons of spray volume.
- Use **KaPre Spectra** by itself to reduce plant stress before, during or after stressful periods at a rate of 1/2 fluid ounce per 1000 feet<sup>2</sup> or 2-6 oz. per 25 gallons of spray volume.

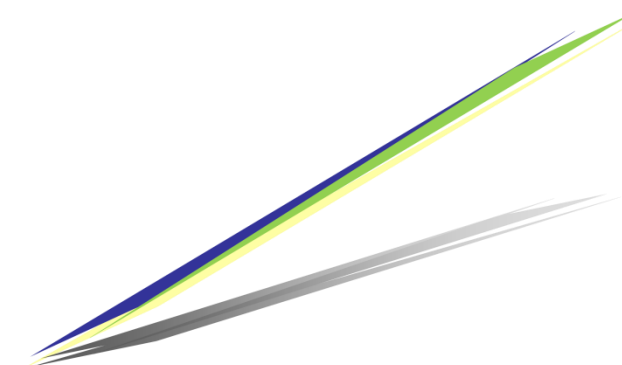
## Trees, Shrubs, Woody Ornamentals and Bedding Plants

- Include **KaPre Spectra** with all foliar nutrient applications at 2 oz. per 25 gallons of spray volume.
- Use by itself to reduce plant stress before, during or after stressful periods at 1/4 fluid ounces per 1000 sq. ft. or 2-6 oz. per 25 gallons of spray volume.

## Warm Season Grasses, Turf and Ornamentals

- Include KaPre Spectra with all foliar nutrient applications at 2 oz. per 25 gallons of spray volume.
- Inject into irrigation or broadcast spray at a rate of 10 fluid ounces per acre one to three times during the growing season.
- Mix with root injections at 4 ounces per 10 gallons of injection solution.

*KaPre and Performance Nutrition are registered Trademarks of LidoChem, Inc. All Rights Reserved by LidoChem, Inc. 2010.*



**KaPre** | **Spectra**

fulvic acid **CONCENTRATE**

enhances **FOLIAR UPTAKE**

unlocks soil **MICRONUTRIENTS**



**LidoChem, Inc.**  
Performance Nutrition Division  
20 Village Court  
Hazlet, NJ 07730  
Ph: 732 888 8000 • Fax: 732 264 2751  
[www.performancefertilizers.com](http://www.performancefertilizers.com)  
[info@lidochem.com](mailto:info@lidochem.com)



## What is KaPre Spectra?



**KaPre Spectra** is a concentrated fulvic acid blend containing a broad range of fulvic acid molecules.

**KaPre Spectra** is an excellent chelator of nutrients.

**KaPre Spectra** is engineered to improve fertilizer absorption and bio-availability to increase the uptake of nutrients and micronutrients.

**KaPre Spectra** is safe and effective for use on lawns, gardens, ornamentals and all nursery grown crops, etc.

**KaPre Spectra** is ideal for use in all transplant solutions, watering solutions, root dips, and seed soaks.

**KaPre Spectra** is compatible with most liquid fertilizers and liquid nutrients, non-selective contact herbicides, systemic insecticides, fungicides and defoliants.

### **KaPre Spectra makes all nutrients more absorbable.**

KaPre Spectra makes vitamins and elemental minerals (metallic and clay based minerals) more absorbable by complexing them into organic, ionic forms that are easily transported into and through cell membranes. Once the nutrients are dissolved and complexed by the fulvic electrolyte, they become bio-chemically reactive, bio-available, mobile, and readily absorbable. In a nutshell, this means you get greater benefit from all your nutrients, whatever the source, when fulvic is present.

### **KaPre Spectra improves fertilizer efficiency.**

This high-quality blend of low molecular weight organic acids can improve fertilizer performance when added to starter, foliar or side dress fertilizer applications. When used as a foliar additive, **KaPre Spectra** offers the added benefit of improving mix-ability of fertilizers and pesticides. That's important when fuel costs and time are critical factors.

### **KaPre Spectra improves tank mix compatibility.**

**KaPre Spectra** is compatible with foliar applications of non-selective herbicides, fungicides, insecticides and other pesticides. In fact, it provides tank mix compatibility of fertilizer/pesticide combinations.

Note: Always do a jar test before combining compounds in a tank mix.

### **KaPre Spectra detoxifies pollutants.**

Fulvic acid is vital in helping form new species of metal ions, binding with organic pollutants such as pesticides and herbicides, and catalyzing the breakdown of toxic pollutants.

### **KaPre Spectra helps transport nutrients.**

**KaPre Spectra** also plays a role in helping transport nutrients into plant foliage and roots. The highly active low-molecular weight formulation improves mobility of solution through cell walls to plant growth points. This results in a more productive and impactful application.

### **KaPre Spectra has proven to be a powerful organic electrolyte, serving to balance cell life.**

If the individual cell is restored to its normal chemical balance thereby turning its electrical potential, we will have given life where death and disintegration would normally occur within the plant cell. KaPre Spectra has the outstanding ability to accomplish this objective in numerous ways.

